

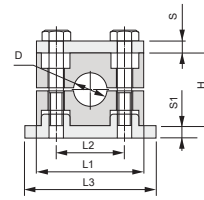
Материалы: * - материал корпуса зажима. См.стр 202

Все остальные элементы (болты, накладки, плиты) производятся из оцинкованной углеродистой стали. для выбора нержавеющей стали добавьте «S» в конце. Например, SH*A-106S

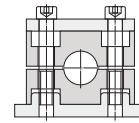
SHPA



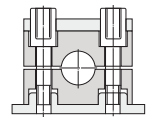
SH*A



SH*C



SH*D



Серия	Заказной код SH*A	Заказной код SH*C	Заказной код SH*D	D мм	D дюйм	DN трубы дюйм	L1	L2	L3	L4	L5	H	S	S1	Глубина	Болт для установки зажимов в колонну	Болт для комплекта с накладкой
H1	SHPA-106.FLD.RU	SHPC-106.FLD.RU	SHPD-106.FLD.RU	6													
	SHPA-108.FLD.RU	SHPC-108.FLD.RU	SHPD-108.FLD.RU	8													
	SHPA-109.5.FLD.RU	SHPC-109.5.FLD.RU	SHPD-109.5.FLD.RU	9.5													
	SHPA-110.FLD.RU	SHPC-110.FLD.RU	SHPD-110.FLD.RU	10	1/8	1/8											
	SHPA-112.7.FLD.RU	SHPC-112.7.FLD.RU	SHPD-112.7.FLD.RU	12.7													
	SHPA-113.5.FLD.RU	SHPC-113.5.FLD.RU	SHPD-113.5.FLD.RU	13.5	1/4	1/4	55	33	74	85	113	32	2 min	8	30	M10×25	M10×45
	SHPA-114.FLD.RU	SHPC-114.FLD.RU	SHPD-114.FLD.RU	14													
	SHPA-115.FLD.RU	SHPC-115.FLD.RU	SHPD-115.FLD.RU	15													
	SHPA-116.FLD.RU	SHPC-116.FLD.RU	SHPD-116.FLD.RU	16													
	SHPA-117.2.FLD.RU	SHPC-117.2.FLD.RU	SHPD-117.2.FLD.RU	17.2	3/8	3/8											
SHPA-118.FLD.RU	SHPC-118.FLD.RU	SHPD-118.FLD.RU	18														
H2	SHPA-218.FLD.RU	SHPC-218.FLD.RU	SHPD-218.FLD.RU	18													
	SHPA-219.FLD.RU	SHPC-219.FLD.RU	SHPD-219.FLD.RU	19													
	SHPA-220.FLD.RU	SHPC-220.FLD.RU	SHPD-220.FLD.RU	20													
	SHPA-221.3.FLD.RU	SHPC-221.3.FLD.RU	SHPD-221.3.FLD.RU	21.3		1/2											
	SHPA-222.FLD.RU	SHPC-222.FLD.RU	SHPD-222.FLD.RU	22			70	45	86	97	125	48	2 min	8	30	M10×40	M10×60
	SHPA-225.FLD.RU	SHPC-225.FLD.RU	SHPD-225.FLD.RU	25													
	SHPA-226.9.FLD.RU	SHPC-226.9.FLD.RU	SHPD-226.9.FLD.RU	26.9	3/4	3/4											
	SHPA-228.FLD.RU	SHPC-228.FLD.RU	SHPD-228.FLD.RU	28													
SHPA-230.FLD.RU	SHPC-230.FLD.RU	SHPD-230.FLD.RU	30														
H3	SHPA-330.FLD.RU	SHPC-330.FLD.RU	SHPD-330.FLD.RU	30													
	SHPA-332.FLD.RU	SHPC-332.FLD.RU	SHPD-332.FLD.RU	32													
	SHPA-333.7.FLD.RU	SHPC-333.7.FLD.RU	SHPD-333.7.FLD.RU	33.7		1											
	SHPA-335.FLD.RU	SHPC-335.FLD.RU	SHPD-335.FLD.RU	35			85	60	100	112	140	60	2 min	8	30	M10×51	M10×70
	SHPA-338.FLD.RU	SHPC-338.FLD.RU	SHPD-338.FLD.RU	38													
	SHPA-340.FLD.RU	SHPC-340.FLD.RU	SHPD-340.FLD.RU	40													
SHPA-342.FLD.RU	SHPC-342.FLD.RU	SHPD-342.FLD.RU	42	1/4	1 1/4												
H4	SHPA-442.FLD.RU	SHPC-442.FLD.RU	SHPD-442.FLD.RU	42	1/4	1 1/4											
	SHPA-444.5.FLD.RU	SHPC-444.5.FLD.RU	SHPD-444.5.FLD.RU	44.5													
	SHPA-448.3.FLD.RU	SHPC-448.3.FLD.RU	SHPD-448.3.FLD.RU	48.3	1/2	1 1/2											
	SHPA-450.8.FLD.RU	SHPC-450.8.FLD.RU	SHPD-450.8.FLD.RU	50.8													
	SHPA-455.FLD.RU	SHPC-455.FLD.RU	SHPD-455.FLD.RU	55			115	90	140	155	187	89	3 min	10	45	M12×82	M12×100
	SHPA-457.FLD.RU	SHPC-457.FLD.RU	SHPD-457.FLD.RU	57													
	SHPA-460.3.FLD.RU	SHPC-460.3.FLD.RU	SHPD-460.3.FLD.RU	60.3	2	2											
	SHPA-463.5.FLD.RU	SHPC-463.5.FLD.RU	SHPD-463.5.FLD.RU	63.5													
SHPA-465.FLD.RU	SHPC-465.FLD.RU	SHPD-465.FLD.RU	65														
SHPA-470.FLD.RU	SHPC-470.FLD.RU	SHPD-470.FLD.RU	70														
H5	SHPA-570.FLD.RU	SHPC-570.FLD.RU	SHPD-570.FLD.RU	70													
	SHPA-575.FLD.RU	SHPC-575.FLD.RU	SHPD-575.FLD.RU	75													
	SHPA-576.1.FLD.RU	SHPC-576.1.FLD.RU	SHPD-576.1.FLD.RU	76.1	1 1/2	1 1/2	150	122	180	198	238	120	3.5 min	10	60	M16×110	M16×130
	SHPA-580.FLD.RU	SHPC-580.FLD.RU	SHPD-580.FLD.RU	80	5/2												
	SHPA-582.5.FLD.RU	SHPC-582.5.FLD.RU	SHPD-582.5.FLD.RU	82.5													
SHPA-588.9.FLD.RU	SHPC-588.9.FLD.RU	SHPD-588.9.FLD.RU	88.9	3	3												
H6	SHPA-688.9.FLD.RU	SHPC-688.9.FLD.RU	SHPD-688.9.FLD.RU	88.9	3	3											
	SHPA-6100.FLD.RU	SHPC-6100.FLD.RU	SHPD-6100.FLD.RU	100													
	SHPA-6102.FLD.RU	SHPC-6102.FLD.RU	SHPD-6102.FLD.RU	102	1 1/2												
	SHPA-6108.FLD.RU	SHPC-6108.FLD.RU	SHPD-6108.FLD.RU	108			205	168	226	259	309	167	4 min	15	80	M20×150	M20×190
	SHPA-6114.FLD.RU	SHPC-6114.FLD.RU	SHPD-6114.FLD.RU	114	4												
	SHPA-6127.FLD.RU	SHPC-6127.FLD.RU	SHPD-6127.FLD.RU	127													
SHPA-6133.FLD.RU	SHPC-6133.FLD.RU	SHPD-6133.FLD.RU	133														
H7	SHPA-7133.FLD.RU	SHPC-7133.FLD.RU	SHPD-7133.FLD.RU	133													
	SHPA-7140.FLD.RU	SHPC-7140.FLD.RU	SHPD-7140.FLD.RU	140	5												
	SHPA-7152.FLD.RU	SHPC-7152.FLD.RU	SHPD-7152.FLD.RU	152													
	SHPA-7159.FLD.RU	SHPC-7159.FLD.RU	SHPD-7159.FLD.RU	159			250	205	270	310	370	200	4 min	15	90	M24×180	M24×220
	SHPA-7165.FLD.RU	SHPC-7165.FLD.RU	SHPD-7165.FLD.RU	165													
SHPA-7168.FLD.RU	SHPC-7168.FLD.RU	SHPD-7168.FLD.RU	168	6													
H8	SHPA-8168.FLD.RU	SHPC-8168.FLD.RU	SHPD-8168.FLD.RU	168													
	SHPA-8177.8.FLD.RU	SHPC-8177.8.FLD.RU	SHPD-8177.8.FLD.RU	177.8													
	SHPA-8193.7.FLD.RU	SHPC-8193.7.FLD.RU	SHPD-8193.7.FLD.RU	193.7			336	265	340	380	440	270	5 min	25	120	M30×256	M30×300
	SHPA-8216.FLD.RU	SHPC-8216.FLD.RU	SHPD-8216.FLD.RU	216													
SHPA-8219.FLD.RU	SHPC-8219.FLD.RU	SHPD-8219.FLD.RU	219	8													
H9	SHPA-9219.FLD.RU	SHPC-9219.FLD.RU	SHPD-9219.FLD.RU	219	8												
	SHPA-9273.FLD.RU	SHPC-9273.FLD.RU	SHPD-9273.FLD.RU	273	10		470	395	520	530	590	410	8 min	30	160	-	M30×450
	SHPA-9324.FLD.RU	SHPC-9324.FLD.RU	SHPD-9324.FLD.RU	324	12												
H10	SHPA-10356.FLD.RU	SHPC-10356.FLD.RU	SHPD-10356.FLD.RU	356	14												
	SHPA-10406.FLD.RU	SHPC-10406.FLD.RU	SHPD-10406.FLD.RU	406	16		630	534	680	690	750	530	20 min	30	180	-	M30×560

* Замените **P** для выбора корпуса из полипропилена на **N** для выбора корпуса из полиамида или на **L** для выбора корпуса из алюминия

* По умолчанию материал пластин и болтов оцинкованная углеродистая сталь. Укажите S после размера для выбора материала нержавеющей сталь, например, SLPA-106S.FLD.RU