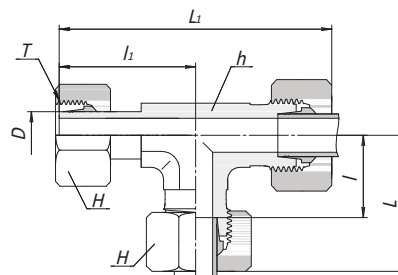
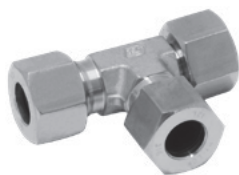


Тройник-адаптер с отводом по направлению

DRTA

DRTA.FLD.RU



Серия	Заказной код	Наружный диаметр	D	h	H	L	L ₁	l	l ₁	T	PN(бар)		
											Угл. сталь	SS316	Латунь
L	DRTA-08L.FLD.RU	8	8	12	17	29	56	14.0	27.5	M14×1.5	315	315	200
	DRTA-10L.FLD.RU	10	10	14	19	30	59	15.0	29.0	M16×1.5	315	315	200
	DRTA-12L.FLD.RU	12	12	17	22	32	62	17.0	29.5	M18×1.5	315	315	200
	DRTA-15L.FLD.RU	15	15	19	27	36	69	21.0	32.5	M22×1.5	315	315	200
	DRTA-18L.FLD.RU	18	18	24	32	40	75	23.5	35.5	M26×1.5	315	315	200
	DRTA-22L.FLD.RU	22	22	27	36	44	83	27.5	38.5	M30×2	160	160	
	DRTA-28L.FLD.RU	28	28	36	41	47	91	30.5	41.5	M36×2	160	160	
	DRTA-35L.FLD.RU	35	35	41	50	56	111	34.5	51.0	M45 x2	160	160	
DRTA-42L.FLD.RU	42	42	50	60	63	123	40.0	56.0	M52×2	160	160		
S	DRTA-06S.FLD.RU	6	6	12	17	31	58	16.0	27.0	M14×1.5	630	630	
	DRTA-08S.FLD.RU	8	8	14	19	32	61	17.0	27.5	M16×1.5	630	630	
	DRTA-10S.FLD.RU	10	10	17	22	34	66	17.5	30.0	M18×1.5	630	630	
	DRTA-12S.FLD.RU	12	12	17	24	38	71	21.5	31.0	M20×1.5	630	630	
	DRTA-14S.FLD.RU	14	14	19	27	40	75	22.0	35.0	M22×1.5	400	400	
	DRTA-16S.FLD.RU	16	16	24	30	43	79	24.5	36.5	M24×1.5	400	400	
	DRTA-20S.FLD.RU	20	20	27	36	48	93	26.5	44.5	M30×2	400	400	
	DRTA-25S.FLD.RU	25	25	36	46	54	105	30.0	50.0	M36×2	400	400	
DRTA-30S.FLD.RU	30	30	41	50	62	119	35.5	55.0	M42×2	400	400		
DRTA-38S.FLD.RU	38	38	50	60	72	138	41.0	63.0	M52×2	315	315		