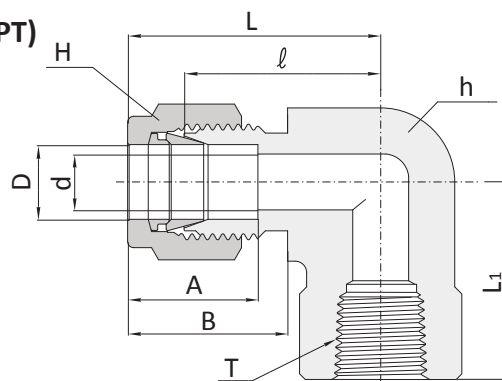
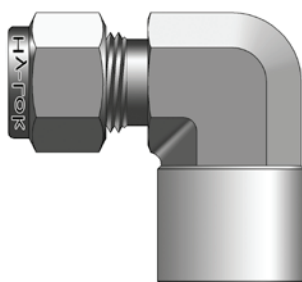


Штуцер угловой с внутренней конической резьбой NPT (или BSPT)

CLF



Соединение дюймовых трубок с наружной резьбой

Заказной номер	Наружный диаметр трубы D		NPT«N» (или BSPT«R»)	d Min.	Размер под ключ				A	B	I	L	L ₁
					h		H						
					дюймы	мм	дюймы	мм					
CLF-2-2N(R)	1/8	3.17	1/8	2.28	1/2	12.70	7/16	11.11	12.70	15.24	18.03	24.63	19.05
CLF-2-4N(R)	1/8	3.17	1/4	2.28	11/16	17.46	7/16	11.11	12.70	15.24	20.82	27.43	22.35
CLF-3-2N(R)	3/16	4.76	1/8	3.04	1/2	12.70	1/2	12.70	13.71	16.00	18.79	25.40	19.05
CLF-4-2N(R)	1/4	6.35	1/8	4.82	1/2	12.70	9/16	14.28	15.24	17.78	19.55	26.92	19.05
CLF-4-4N(R)	1/4	6.35	1/4	4.82	11/16	17.46	9/16	14.28	15.24	17.78	22.35	29.71	22.35
CLF-4-6N(R)	1/4	6.35	3/8	4.82	13/16	20.63	9/16	14.28	15.24	17.78	24.38	31.75	22.35
CLF-4-8N(R)	1/4	6.35	1/2	4.82	1	25.40	9/16	14.28	15.24	17.78	27.17	34.54	28.44
CLF-5-2N(R)	5/16	7.93	1/8	6.35	9/16	14.28	5/8	15.87	16.25	18.54	21.33	28.70	19.05
CLF-5-4N(R)	5/16	7.93	1/4	6.35	11/16	17.46	5/8	15.87	16.25	18.54	23.11	30.48	22.35
CLF-6-2N(R)	3/8	9.52	1/8	7.11	5/8	15.87	11/16	17.46	16.76	19.30	23.11	30.84	19.05
CLF-6-4N(R)	3/8	9.52	1/4	7.11	11/16	17.46	11/16	17.46	16.76	19.30	23.87	31.24	22.35
CLF-6-6N(R)	3/8	9.52	3/8	7.11	13/16	20.63	11/16	17.46	16.76	19.30	25.90	33.27	22.35
CLF-6-8N(R)	3/8	9.52	1/2	7.11	1	25.40	11/16	17.46	16.76	19.30	28.70	36.06	28.44
CLF-8-4N(R)	1/2	12.70	1/4	10.41	13/16	20.63	7/8	22.22	22.86	21.84	25.90	36.06	22.35
CLF-8-6N(R)	1/2	12.70	3/8	10.41	13/16	20.63	7/8	22.22	22.86	21.84	25.90	36.06	22.35
CLF-8-8N(R)	1/2	12.70	1/2	10.41	1	25.40	7/8	22.22	22.86	21.84	28.70	38.86	28.44
CLF-10-6N(R)	5/8	15.87	3/8	12.70	15/16	23.80	1	25.40	24.38	21.84	27.94	38.10	22.35
CLF-10-8N(R)	5/8	15.87	1/2	12.70	1	25.40	1	25.40	24.38	21.84	29.71	39.87	28.44
CLF-12-8N(R)	3/4	19.05	1/2	15.74	1-1/16	26.98	1-1/8	28.57	24.38	21.84	29.71	39.87	28.44
CLF-12-12N(R)	3/4	19.05	3/4	15.74	1-3/8	34.92	1-1/8	28.57	24.38	21.84	34.54	44.70	31.75
CLF-14-12N(R)	7/8	22.22	3/4	18.28	1-3/8	34.92	1-1/4	31.75	25.90	21.84	34.54	44.70	31.75
CLF-16-12N(R)	1	25.40	3/4	22.35	1-3/8	34.92	1-1/2	38.10	31.24	26.41	36.83	49.02	31.75
CLF-16-16N(R)	1	25.40	1	22.35	1-11/16	42.86	1-1/2	38.10	31.24	26.41	38.10	50.29	38.10

Соединение метрических трубок с наружной резьбой

Заказной номер	Наружный диаметр трубы D	NPT«N» (или BSPT«R»)	d Min.	Размер под ключ		A	B	I	L	L ₁
				h	H					
CLF-6M-2N(R)	6	1/8	4.8	12.7	14	15.3	17.7	19.6	27.0	19.00
CLF-6M-4N(R)	6	1/4	4.8	17.5	14	15.3	17.7	22.4	29.8	22.40
CLF-6M-6N(R)	6	3/8	4.8	20.6	14	15.3	17.7	24.4	31.7	22.40
CLF-6M-8N(R)	6	1/2	4.8	25.4	14	15.3	17.7	27.2	34.6	28.40
CLF-8M-4N(R)	8	1/4	6.4	17.65	16	16.2	18.6	23.1	30.6	22.40
CLF-8M-8N(R)	8	1/2	6.4	20.6	16	16.2	18.6	28.0	35.2	28.40
CLF-10M-2N(R)	10	1/8	7.9	17.5	19	17.2	19.5	23.9	31.5	19.00
CLF-10M-4N(R)	10	1/4	7.9	17.5	19	17.2	19.5	25.9	33.5	22.40
CLF-10M-6N(R)	10	3/8	7.9	20.6	19	17.2	19.5	25.9	33.5	22.40
CLF-10M-8N(R)	10	1/2	7.9	25.4	19	17.2	19.5	28.7	36.1	28.40
CLF-12M-4N(R)	12	1/4	9.5	20.6	22	22.8	22.0	25.9	36.0	22.40
CLF-12M-6N(R)	12	3/8	9.5	20.6	22	22.8	22.0	25.9	36.0	22.40
CLF-12M-8N(R)	12	1/2	9.5	25.4	22	22.8	22.0	28.7	38.8	28.40
CLF-16M-8N(R)	16	1/2	12.7	27.0	25	24.4	22.0	29.7	39.5	28.40

Все размеры указаны в миллиметрах, за исключением отдельно обозначенных.