

Capsule pressure gauge Model 611.13, plastic version

WIKA data sheet PM 06.12



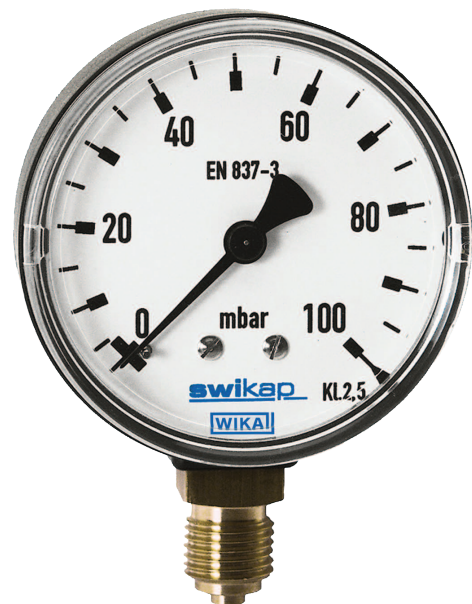
swikap
by WIKA

Applications

- For gaseous, dry and non-aggressive media
- Medical, vacuum, environmental, heating technology, for contents measurement and filter monitoring

Special features

- Compact design and ingress protection IP 53
- Case from plastic
- Special connection location on request
- Low scale ranges from 0 ... 60 mbar
- Maximum scale range 0 ... 1,000 mbar



Capsule pressure gauge, model 611.13

Description

Design

EN 837-3

Nominal size in mm

50, 63

Accuracy class

2.5

Scale ranges

0 ... 60 mbar to 0 ... 1,000 mbar

or all other equivalent vacuum or combined pressure and vacuum ranges

Pressure limitation

Steady: Full scale value

Fluctuating: 0.9 x full scale value

Permissible temperature

Ambient: -20 ... +60 °C

Medium: +60 °C maximum

Temperature effect

When the temperature of the measuring system deviates from the reference temperature (+20 °C):

max. $\pm 0.6\%$ / 10 K of full scale value

Ingress protection

IP 53 per EN 60529 / IEC 529

Standard version

Process connection

Copper alloy, lower mount (LM) or centre back mount (CBM), G ¼ B male, 14 mm flats

Pressure element

Copper-beryllium alloy (CuBe)

Sealing

NBR

Movement

Copper alloy

Dial

Aluminium, white, black lettering

Pointer

Aluminium, black

Case

Plastic, black

Window

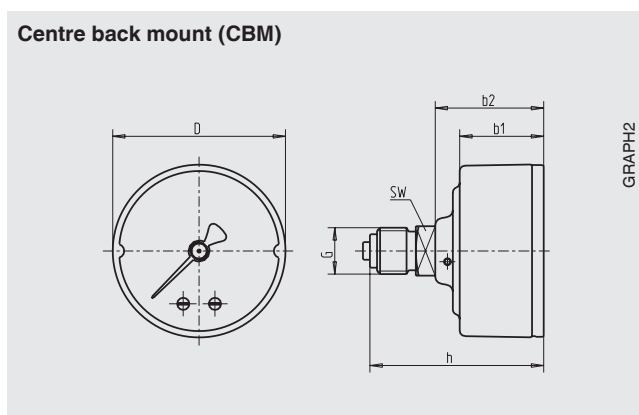
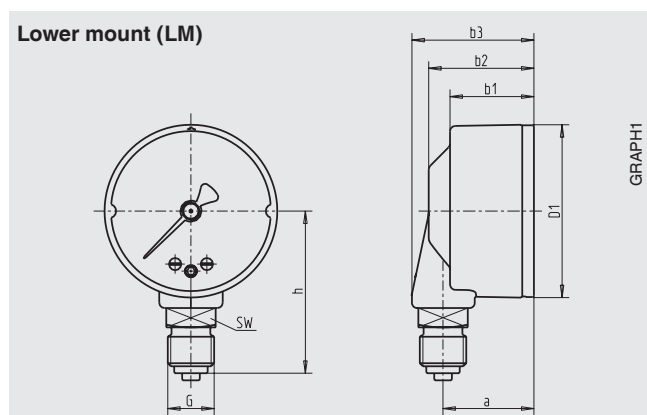
Plastic, crystal-clear, snap-fitted in case

Options

- Other process connection
- Sealings (model 910.17, see data sheet AC 09.08)
- Overpressure or vacuum safety (on request)
- Accuracy class 1.6
- Zero adjustment, in front
- Restrictor

Dimensions in mm

Standard version



NS	Connection location	Dimensions in mm				D	G	h ±1	SW	Weight in kg
		a	b ₁	b ₂	b ₃					
50	lower mount (LM)	26	24	30	35	49	G ¼ B	48	14	0.07
50	back mount (BM)	-	24	31	-	49	G ¼ B	51.5	14	0.07
63	lower mount (LM)	25.5	24	29.5	34.5	62	G ¼ B	48	14	0.08
63	back mount (BM)	-	24	31	-	62	G ¼ B	51.5	14	0.08

Process connection per EN 837-1 / 7.3

Ordering information

Model / Nominal size / Scale range / Connection size / Connection location / Options

Approvals

- GOST, metrology/measurement technology, Russia
- GOST-R, import certificate, Russia

Certificates ¹⁾

- 2.2 test report per EN 10204 (e.g. state-of-the-art manufacturing, material proof, indication accuracy)
- 3.1 inspection certificate per EN 10204 (e.g. material proof for wetted metallic parts, indication accuracy)

1) Option

Approvals and certificates, see website